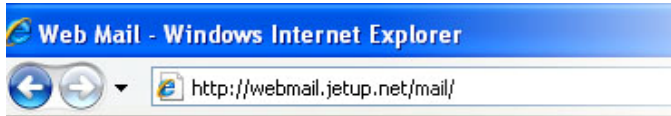
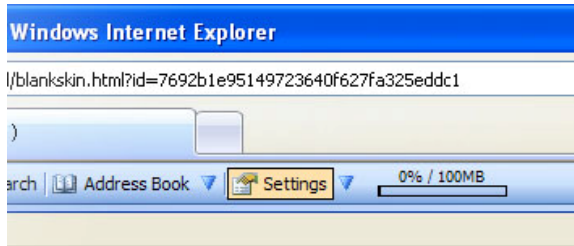


Changing your E-mail password

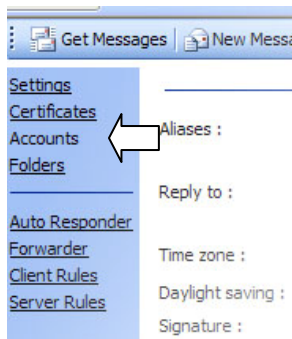
1. Open Internet Explorer and go to <http://webmail.jetup.net>



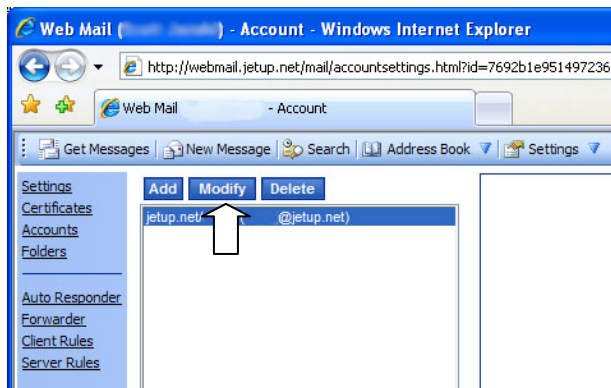
2. Sign in using your existing username and password
3. Click on Settings



4. On the left-hand side of the page click on Accounts.



5. Click on Modify



6. Enter your new password in the password field.

A screenshot of the password change form in the Web Mail interface. The form is titled "Account" and includes fields for "Account name:" (jetup.net/), "E-mail address:" (@jetup.net), "Enter new password:", and "Confirm new password:". Below the form, there is a note: "Passwords must be at least 8 characters long, contain 2 letters (a-z, A-Z), 2 numbers (0-9), and 1 special character (i.e. # \$ % ^ & * etc)." and an example: "Example: P@55wd4Me (do not use this example!)".

Note that passwords must now be at least 8 characters long and contain at least 2 alpha characters along with 2 numbers and 1 special character (i.e. !@#\$%^&*) Example: P@55wd4Me

7. Click on Save Changes

Caution:

If you change your e-mail password, Benton Telephone/Cablevision will not have a record of it.

Please write it down for future reference. If you forget it, the next step is to call us during business hours to reset your password.